

GROWERS square

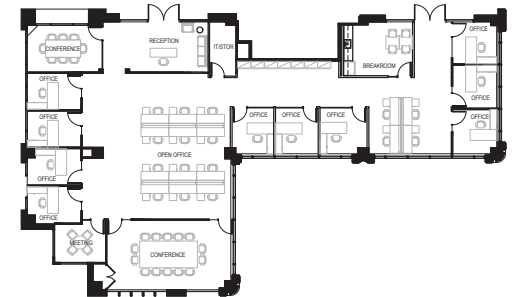
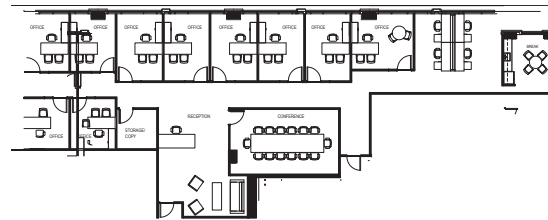
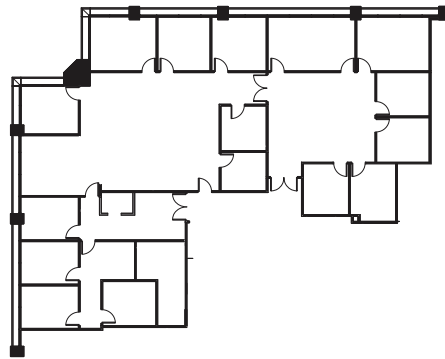
walnut creek

HIGHLY EFFICIENT FLOOR PLATES



PROGRAM REQUIREMENTS

- 10 PRIVATE OFFICES
- MAXIMUM WORKSTATIONS
- 1 CONFERENCE ROOM
- 1 BREAKROOM
- 1 RECEPTION AREA
- 1 STORAGE ROOM



GROWER'S SQUARE

YGNACIO CENTER III

THE PLAZA AT WALNUT CREEK

RSF	±4,533	±4,329	±5,690
COST/SF/MO	\$5.25	\$4.25	\$5.00
ANNUAL COST	\$285,000	\$221,000	\$342,000
FIT FACTOR	29 EMPLOYEES	15 EMPLOYEES	29 EMPLOYEES
AVG. RSF/EMPLOYEE	156 RSF	289 RSF	196 RSF
ANNUAL COST/EMPLOYEE	\$9,828	\$14,739	\$11,760

FOR MORE INFORMATION
PLEASE CONTACT

BRECK LUTZ BLUTZ@NGKF.COM
925.974.0109 | CA RE LICENSE #00936859

KNUTE BUCKLEW KBUCKLEW@NGKF.COM
925.974.0240 | CA RE LICENSE #01332731

DANNY BARTZ DBARTZ@NGKF.COM
925.974.0231 | CA RE LICENSE #01971819